

Aluminum Compression Lugs

Dual Rated - Narrow Tang

Conductor Range: 600kcmil-4

TYPE IACL

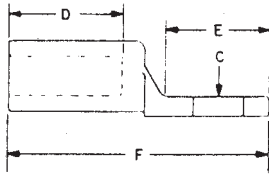
Features

- Manufactured from high strength aluminum alloy
- Four OD sizes accommodate a wire range from #4 to 600 kcmil
- Chamfered barrel
- Prefilled with DE-OX
- Color coded end caps inserted in barrel and ink marked with die number and number of crimps
- Electro tin plated
- Suitable for use in circuits rated 35KV or less, proper high voltage spacing and insulation techniques must be used
- Rated to 90° C

Benefits

- Provides maximum conductivity and excellent crimping characteristics
- Requires only four installation dies to crimp eleven conductor sizes. Tang width remains constant within an OD size and is designed to fit transformer pads.
- Provides easy conductor insertion
- Prevents oxides from forming
- Prevents foreign materials from entering the connector prior to usage and color code identifies the proper compression die
- Provides low contact resistance
- Ensures reliability
- Application versatility

A



Catalog Number	Wire Size	Wire Range When Installed With IDT-12-N Tool	Tang Width	Bolt Size	Dimensions				Ilsco Die Index	Die Color Code
					D	E	F	C		
IACL-4	4	4-6	29/32	1/2	1-7/16	1-3/32	3	9/16	9	Orange
IACL-2	2	2-6	29/32	1/2	1-7/16	1-3/32	3	9/16	9	Orange
IACL-1/0	1/0	1/0-1	29/32	1/2	1-7/16	1-3/32	3	9/16	9	Orange
IACL-2/0	2/0	2/0-1	29/32	1/2	1-7/16	1-9/32	3-3/16	9/16	12	White
IACL-3/0	3/0	3/0-1	29/32	1/2	1-7/16	1-9/32	3-3/16	9/16	12	White
IACL-4/0	4/0	4/0-1	29/32	1/2	1-7/16	1-9/32	3-3/16	9/16	12	White
IACL-250	250kcmil	250kcmil-1/0	29/32	1/2	1-7/16	1-9/32	3-3/16	9/16	12	White
IACL-300	300kcmil	300kcmil-2/0	1-1/4	1/2	1-3/4	1-5/16	3-11/16	9/16	14	Blue
IACL-350	350kcmil	350kcmil-3/0	1-1/4	1/2	1-3/4	1-5/16	3-11/16	9/16	14	Blue
IACL-500	500kcmil	500kcmil-4/0	1-1/4	1/2	1-3/4	1-5/16	3-11/16	9/16	14	Blue
IACL-600	600kcmil	600kcmil-250kcmil	1-19/32	1/2	3-3/16	1-5/8	5-3/4	9/16	18	Yellow

Tooling Information

Catalog Number	Color	ILSCO					Burdyn								Thomas & Betts			Anderson
		Die Index	ILC-12-N ILC-12H-N 12 Ton	ILCB-12-N ILCB-12-LIO	ILC-15H	IDT-12-N Dieless	Die Index	Y34A	Y35	Y39	Y45	Y46	Y48B	Y644M Dieless	Die Index	13642 12 Ton	TBM 15 15 Ton	21940 40 Ton
IACL-4	Orange	9	(3)	(3)	(2)	(1)	297	(2)	(2)	(2)	(2)	(2)	(1)	50	(2)	(2)	(2)	(2)
IACL-2	Orange	9	(3)	(3)	(2)	(1)	297	(2)	(2)	(2)	(2)	(2)	(1)	50	(2)	(2)	(2)	(2)
IACL-1/0	Orange	9	(3)	(3)	(2)	(1)	297	(2)	(2)	(2)	(2)	(2)	(1)	50	(2)	(2)	(2)	(2)
IACL-2/0	White	12	(1)	(1)	(2)	(1)	324	(2)	(2)	(2)	(2)	(2)	(1)	71	(2)	(2)	(2)	(2)
IACL-3/0	White	12	(1)	(1)	(2)	(1)	324	(2)	(2)	(2)	(2)	(2)	(1)	71	(2)	(2)	(2)	(2)
IACL-4/0	White	12	(1)	(1)	(2)	(1)	324	(2)	(2)	(2)	(2)	(2)	(1)	71	(2)	(2)	(2)	(2)
IACL-250	White	12	(1)	(1)	(2)	(1)	324	(2)	(2)	(2)	(2)	(2)	(1)	71	(2)	(2)	(2)	(2)
IACL-300	Blue	14	(2)	(2)	(2)	(1)	299	-	(2)	(2)	(2)	(2)	(1)	87	(2)	(2)	(2)	(2)
IACL-350	Blue	14	(2)	(2)	(2)	(1)	299	-	(2)	(2)	(2)	(2)	(1)	87	(2)	(2)	(2)	(2)
IACL-500	Blue	14	(2)	(2)	(2)	(1)	299	-	(2)	(2)	(2)	(2)	(1)	87	(2)	(2)	(2)	(2)
IACL-600	Yellow	18	(3)	(3)	(3)	(1)	936	-	-	(3)	(3)	(3)	(1)	115	(3)	(3)	(3)	-

All wire sizes, unless noted otherwise, are American Wire Gauge (AWG)

See stuffer sheet for complete information on tooling.

Tested to UL 486A/B, UL File E6207