

Aluminum Conduit Bodies

Set Screw Type for EMT (Thinwall Conduit)

Types LB, T, LL, LR, C

Use:

To provide access to conductors for pulling, splicing, maintenance and future changes/upgrades. Allows connection of straight conduit runs, branch conduit runs and 90° bends.


Features:

- Slotted hex head steel hardened cup-point set screw for EMT.
- Internal volume and maximum wire clearly marked on castings.
- For covers and gaskets, see Page AC5.

Material/Finish:

Die-cast Copper-free Aluminum/
Aluminum Enamel

Third Party Certification:

 UL Listed: E-18095

 CSA Certified: 009795

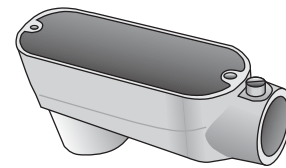
Applicable Third Party Standards:

UL Standard: 514A
CSA Standard: C22.2 No. 18
Fed Spec: A-A-50563
NEMA: FB-1, FB-2.10

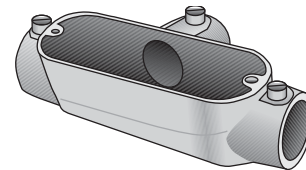
Dimensional Data:

See Pages AC8 - AC9.

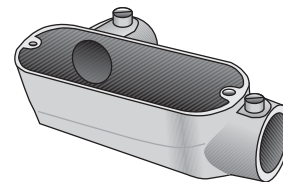
Trade Size (inches)	Catalog Number
1/2	LB-50A-TW
3/4	LB-75A-TW
1	LB-100A-TW
1 1/4	LB-125A-TW
1 1/2	LB-150A-TW
2	LB-200A-TW
1/2	T-50A-TW
3/4	T-75A-TW
1	T-100A-TW
1 1/4	T-125A-TW
1 1/2	T-150A-TW
2	T-200A-TW
1/2	LL-50A-TW
3/4	LL-75A-TW
1	LL-100A-TW
1 1/4	LL-125A-TW
1 1/2	LL-150A-TW
2	LL-200A-TW
1/2	LR-50A-TW
3/4	LR-75A-TW
1	LR-100A-TW
1 1/4	LR-125A-TW
1 1/2	LR-150A-TW
2	LR-200A-TW
1/2	C-50A-TW
3/4	C-75A-TW
1	C-100A-TW
1 1/4	C-125A-TW
1 1/2	C-150A-TW
2	C-200A-TW



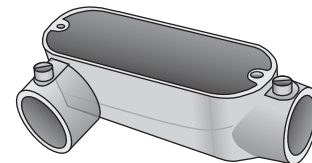
Type LB-TW



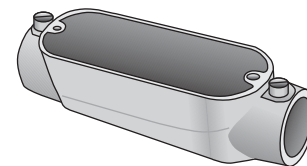
Type T-TW



Type LL-TW



Type LR-TW

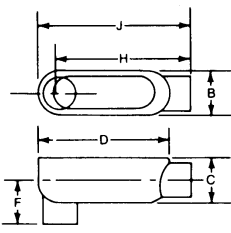


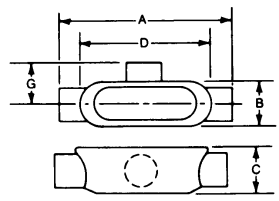
Type C-TW

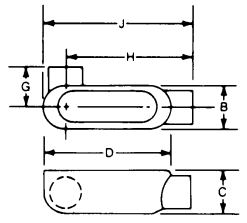
Aluminum Conduit Bodies

Set Screw Type for EMT (Thinwall Conduit)

Dimensional Data:

Type LB	Catalog Number	Trade Size	Dimensions in Inches						Volume Cu. In.	Max No. Conductors
			B	C	D	F	H	J		
	LB-50A-TW	1/2	1 1/4	1 1/8	4	1 1/8	3 3/8	4 1/2	4.3	N/A
	LB-75A-TW	3/4	1 1/2	1 1/8	4 5/8	1 1/8	4 1/4	5 1/8	7.3	3 #6AWG
	LB-100A-TW	1	1 3/4	2	5 5/8	2	5	6 1/8	12.2	3 #4AWG
	LB-125A-TW	1 1/4	2 1/2	2 3/8	7 1/4	2 1/4	6 1/2	7 1/8	34.0	3 #2AWG
	LB-150A-TW	1 1/2	2 1/2	2 3/4	7 1/4	2 1/4	6 1/2	7 3/8	35.8	3 #1/0AWG
	LB-200A-TW	2	3 3/8	3 3/8	9 1/2	2 5/8	8 1/4	10 1/8	77.5	3 #4/0AWG

Type T	Catalog Number	Trade Size	Dimensions in Inches					Volume Cu. In.	Max No. Conductors
			A	B	C	D	G		
	T-50A-TW	1/2	5	1 1/4	1 3/8	4	1 1/2	4.2	N/A
	T-75A-TW	3/4	5 5/8	1 1/2	1 1/8	4 5/8	1 1/8	7.1	3 #6AWG
	T-100A-TW	1	6 3/4	1 3/4	2	5 1/4	2	12.0	3 #4AWG
	T-125A-TW	1 1/4	8 3/8	2 1/2	2 3/8	7 1/4	2 1/4	31.5	3 #2AWG
	T-150A-TW	1 1/2	8 3/8	2 1/2	2 3/4	7 1/4	2 1/4	34.5	3 #1AWG
	T-200A-TW	2	10 3/8	3 3/8	3 3/8	9 1/2	2 3/8	75.0	3 #2/0AWG

Type LL	Catalog Number	Trade Size	Dimensions in Inches						Volume Cu. In.	Max No. Conductors
			B	C	D	G	H	J		
	LL-50A-TW	1/2	1 1/4	1 1/8	4	1 1/2	3 3/8	4 1/2	4.3	N/A
	LL-75A-TW	3/4	1 1/2	1 1/8	4 5/8	1 1/8	4 1/4	5 1/8	7.3	3 #6AWG
	LL-100A-TW	1	1 3/4	2	5 5/8	2	5	6 1/8	12.2	3 #4AWG
	LL-125A-TW	1 1/4	2 1/2	2 3/8	7 1/4	2 1/4	6 1/2	7 1/8	34.0	3 #2AWG
	LL-150A-TW	1 1/2	2 1/2	2 3/4	7 1/4	2 1/4	6 1/2	7 3/8	35.8	3 #1AWG
	LL-200A-TW	2	3 3/8	3 3/8	9 1/2	2 5/8	7 1/4	10 1/8	77.5	3 #2/0AWG