

EMT Straps

Type 15 & Type THTW

Steel Straps

Feature:

- Snap type-double ribbed

Material/Finish:
Steel/Zinc Plated

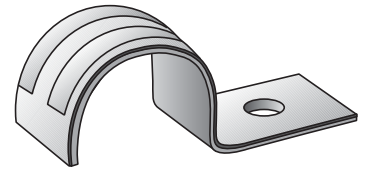
Third Party Certification:



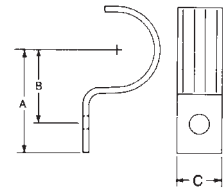
CSA Certified: 104691

Applicable Third Party Standards:
CSA Standard: C22.2 No. 18

ONE HOLE					
Trade Size (inches)	Catalog Number	Dimensions in Inches			Bolt Size
		A	B	C	
1/2	15-50S	1 1/4	7/8	9/16	1/4
3/4	15-75S	1 3/8	1 1/16	5/8	1/4
1	15-100S	1 5/8	1 1/4	3/4	1/4
1 1/4	15-125S	2	1 1/2	7/8	5/16
1 1/2	15-150S	2 1/8	1 11/16	1	3/8
2	15-200S	2 5/8	2	1 1/8	7/16
2 1/2	14-250S	4 3/8	2 5/8	1 1/4	1/2
3	14-300S	4 3/4	3	1 1/4	1/2
3 1/2	14-350S	5 3/16	3 9/16	1 1/2	5/8
4	14-400S	5 7/16	3 15/16	1 1/2	5/8



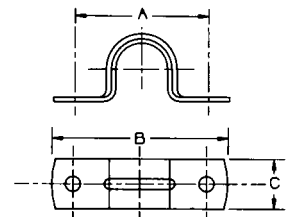
Type 15



TWO HOLE					
Trade Size (inches)	Catalog Number	Dimensions in Inches			Bolt Size
		A	B	C	
1/2	THTW-50S	1 19/32	2 1/8	5/8	3/16
3/4	THTW-75S	1 23/32	2 1/4	5/8	3/16
1	THTW-100S	2 5/32	2 7/8	23/32	1/4
1 1/4	THTW-125S	2 25/32	3 1/2	23/32	1/4
1 1/2	THTW-150S	3 5/32	3 3/4	23/32	1/4
2	THTW-200S	3 13/16	4 15/32	23/32	1/4
2 1/2	THR-250S	4 11/16	5 23/32	1	5/16
3	THR-300S	5 11/16	6 3/4	1	5/16
3 1/2	THR-350S	6 5/16	7 3/16	1	5/16
4	THR-400S	6 27/32	7 13/16	1	5/16



Type THTW



Type 333G

EMT Nail Straps

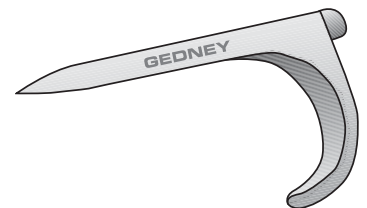
Material:

Malleable Iron

Finish:

Mechanical Galvanized

Trade Size (inches)	Catalog Number	Dimensions in Inches	
		Nail Length	Nominal Thickness
1/2	333G	2 3/16	3/16
3/4	334G	2 1/2	3/16
1	335G	2 7/8	3/16



Type 333G

EMT Malleable Iron Straps and Spacers

Type 15-G

One Hole

Material:
Malleable Iron

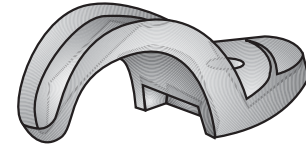
Finish:
Hot Dip Galvanized

Third Party Certification:
 CSA Certified: 9795

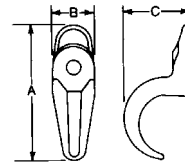
Applicable Third Party Standards:
CSA Standard: C22.2 No. 18

Trade Size (inches)	Catalog Number	Dimensions in Inches			Bolt Size
		A	B	C	
1/2	15-50G	1 ¹⁵ / ₁₆	3/4	7/8	1/4
3/4	15-75G	2 ⁷ / ₃₂	23 ²³ / ₃₂	1 ¹ / ₈	1/4
1	15-100G	2 ⁷ / ₃₂	3/4	1 ¹¹ / ₃₂	1/4
1 1/4	15-125G	2 ¹⁹ / ₃₂	25 ²⁵ / ₃₂	1 ¹¹ / ₃₂	5/16
1 1/2	15-150G	3 ¹ / ₄	7/8	1 ¹⁵ / ₁₆	3/8
2	15-200G	3 ²⁵ / ₃₂	1	2 ⁷ / ₁₆	7/16
2 1/2	14-250G*	5 ¹⁵ / ₁₆	1 ³ / ₈	3 ¹ / ₁₆	1/2
3	14-300G*	7 ⁷ / ₁₆	1 ⁵ / ₈	3 ¹³ / ₁₆	1/2
3 1/2	14-350G*	8 ³ / ₁₆	1 ¹³ / ₁₆	4 ³ / ₈	5/8
4	14-400G*	8 ¹¹ / ₁₆	2	5	5/8

*Suitable for use with rigid conduit or IMC.



Type 15-G



Note:
For rigid conduit & IMC straps see Page EA15.

Conduit Spacers

Material:
Malleable Iron or Cast Iron

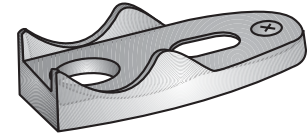
Finish:
Mechanically Galvanized or Hot Dip Galvanized

Third Party Certification:
 CSA Certified: 9795

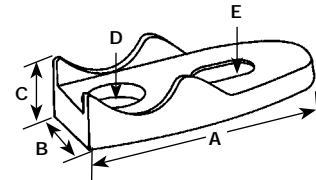
Applicable Third Party Standards:
CSA Standard: C22.2 No. 18

Trade Size (Inches)	Catalog Number	Dimensions in Inches				
		A	B	C	D	E
1/2	141G	1 ¹³ / ₃₂	1 ¹ / ₈	7/16	3/8	3/8 X 9/16
3/4	142G	2 ¹ / ₂	1 ¹ / ₈	1/2	3/8	7/16 X 9/16
1	143G	3 ³ / ₁₆	1 ⁷ / ₃₂	9/16	3/8	7/16 X 3/4
1 1/4	144G	3 ¹¹ / ₁₆	1 ¹³ / ₃₂	45 ⁴⁵ / ₆₄	1/2	1/2 X 3/4
1 1/2	145G	3 ¹⁵ / ₁₆	1 ⁹ / ₁₆	13 ¹³ / ₁₆	9/16	35 ³⁵ / ₆₄ X 15 ¹⁵ / ₁₆
2	146G	5 ¹ / ₈	2	3/4	9/16	5/8 X 1
2 1/2	147G	5 ³ / ₄	2 ¹⁵ / ₃₂	3/4	15 ¹⁵ / ₃₂	5/8 X 1 1/8
3	148G	7 ¹ / ₈	2 ¹³ / ₁₆	13 ¹³ / ₁₆	15 ¹⁵ / ₃₂	5/8 X 1 1/8
3 1/2	149G	8	3 ⁷ / ₃₂	3 ¹ / ₃₂	15 ¹⁵ / ₃₂	11 ¹¹ / ₁₆ X 1 11 ¹¹ / ₃₂
4	150G	8 ³ / ₄	3 ¹³ / ₃₂	3 ¹ / ₃₂	15 ¹⁵ / ₃₂	23 ²³ / ₃₂ X 1 9 ⁹ / ₃₂
5	151G	10	3 ²³ / ₃₂	1 ¹³ / ₆₄	1/2	23 ²³ / ₃₂ X 1 9 ⁹ / ₃₂
6	152G	11 ¹³ / ₁₆	3 ¹⁵ / ₁₆	1 1/2	1/2	1 1/4 X 2

*Cast Iron



Type 141G



Nest Backs

Use:
Supplementary spacer for use with malleable iron pipe straps and clamp back.

Features:
• Spacer fits snugly under clamp back and makes possible additional spacing away from the mounting surface. Units fit securely into each other so that conduit can be installed at any desired distance from walls or ceilings.

Materials:
Malleable Iron or Cast Iron

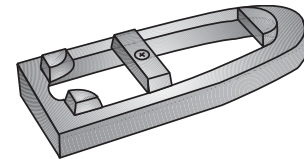
Finish:
Mechanically Galvanized or Hot Dip Galvanized

Third Party Certification:
 CSA Certified: 009795

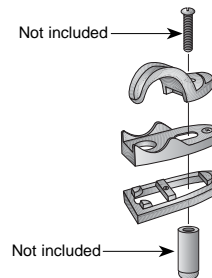
Applicable Third Party Standards:
CSA Standard: C22.2 No. 18

Trade Size (inches)	Catalog Number	Dimensions in Inches		
		Length	Width	Thickness
1/2	141-NG	2 1/2	1 1/16	1/4
3/4	142-NG	2 1/2	1 1/8	1/4
1	143-NG	3 3/16	1 7/16	1/4
1 1/4	144-NG	3 3/4	1 1/4	1/4
1 1/2	145-NG	3 ¹⁵ / ₁₆	1 ⁹ / ₁₆	1/4
2	146-NG	5 ⁵ / ₁₆	2 ³ / ₁₆	1/4
2 1/2	147-NG	5 ¹³ / ₁₆	2 ⁹ / ₁₆	3/8
3	*148-NG	7 ³ / ₁₆	2 ¹³ / ₁₆	3/8
3 1/2	*149-NG	8	3 1/4	3/8
4	150-NG	8 3/4	3 7/16	3/8

*Cast Iron



Type 141-NG



Typical Installation