

# McGILL® 0121/0140 Series Multi-Pole Toggle Switches

## Applications

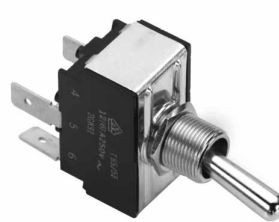
- McGill full-size, single pole toggle switches are available in several electrical ratings to meet a variety of requirements.
- Ruggedly constructed with metallic toggle and threaded bushing to ensure extended service life.
- Marine, food service, generator, industrial control and office automation markets.
- Appropriate for use in low voltage Vdc applications.

## Features

- A variety of circuits are available.
- Available with screw, solder, and 1/4" quick connect terminals.
- Mounting hardware and terminal screws (where applicable) furnished unassembled.
- Mounting hardware consists of nickel plated hex nut and knurled nut.
- Indicating plate is furnished for maintained ON-OFF circuits.

## Standard Materials

- Base: phenolic +150 °C (+302 °F)
- Bat handle: nickel plated brass
- Bushing: nickel plated brass



0121-0009N



0121-0010N

## NEC/CEC Certifications and Compliances

- UL Recognized Component
- UL File Number: E335442
- UL Standard: 1054, Guide WORY2
- CSA File Number: 249055
- CSA Standard: C22.2 No. 55
- RoHS Compliant

Circuitry			Screw Terminal		Solder Terminal		1/4" Q.C. Terminal		Rating
A	B	C	Poles	Catalog Number	Poles	Catalog Number	Poles	Catalog Number	
<b>15 Amp, 2 Poles</b>									
ON	—	OFF	DPST	0121-0001N	DPST	0121-0017N	DPST	0121-0009N	15 Amp, 125 Vac 10 Amp, 250 Vac 3/4 HP, 250 Vac
ON	—	ON	DPDT	0121-0003N	DPDT	0121-0019N	DPDT	0121-0011N	
(ON)	—	OFF	DPST	0121-0005N	DPST	0121-0021N	DPST	0121-0013N	
ON	—	(ON)	DPDT	0121-0006N	DPDT	0121-0022N	DPDT	0121-0014N	
(OFF)	—	ON	DPST	0121-0043N	DPST	0121-0045N	DPST	0121-0044N	15 Amp, 125 Vac 10 Amp, 250 Vac 3/4 HP, 125-250 Vac
ON	OFF	ON	DPDT	0121-0002N	DPDT	0121-0018N	DPDT	0121-0010N	
(ON)	OFF	(ON)	DPDT	0121-0004N	DPDT	0121-0020N	DPDT	0121-0012N	
ON	OFF	(ON)	DPDT	0121-0007N	DPDT	0121-0023N	DPDT	0121-0015N	
(ON)	ON	ON	SPTT	—	SPTT	—	SPTT	0127-0001N ①	
<b>17 Amp, 3 Pole</b>									
ON	—	OFF	3PST	0140-3020N	3PST	0140-3010N	3PST	0140-3000N	6 Amp, 600 Vac 17 Amp, 125 Vac 12 Amp, 250 Vac 2 HP, 480-600 Vac 3 Phase
(ON)	—	OFF	3PST	0140-3021N	3PST	0140-3011N	3PST	0140-3001N	6 Amp, 600 Vac 17 Amp, 125 Vac 12 Amp, 250 Vac 1-1/2 HP, 240 Vac
ON	—	(OFF)	3PST	0140-3022N	3PST	0140-3012N	3PST	0140-3002N	1,2 or 3 Phase 2 HP, 480-600 Vac 3 Phase
ON	—	ON	3PDT	0140-3024N	3PDT	0140-3014N	3PDT	0140-3004N	6 Amp, 600 Vac 17 Amp, 125 Vac 12 Amp, 250 Vac 1 HP, 125 Vac 1-1/2 HP, 250 Vac 1,2 or 3 Phase 2 HP, 480-600 Vac 3 Phase
ON	—	(ON)	3PDT	0140-3025N	3PDT	0140-3015N	3PDT	0140-3005N	
ON	OFF	ON	3PDT	0140-3023N	3PDT	0140-3013N	3PDT	0140-3003N	6 Amp, 600 Vac 17 Amp, 125 Vac 12 Amp, 250 Vac 1 HP, 125 Vac 1-1/2 HP, 250 Vac 1,2 or 3 Phase 2 HP, 480-600 Vac 3 Phase
ON	OFF	(ON)	3PDT	0140-3026N	3PDT	0140-3016N	3PDT	0140-3006N	
(ON)	OFF	(ON)	3PDT	0140-3027N	3PDT	0140-3017N	3PDT	0140-3007N	

( ) Momentary. Poles: SP = single pole, DP = double pole, ST = single throw, DT = double throw, TT = triple throw.

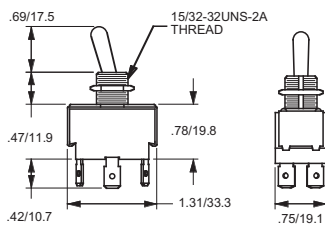
① Not UL or CSA Listed.

Shaded catalog numbers are normally stocked items. All other items are made to order. Contact your local sales representative for pricing.

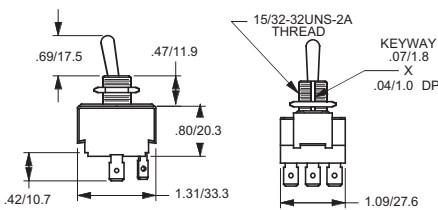
# McGILL® 0121/0140 Series Multi-Pole Toggle Switches

Circuitry			Screw Terminal		Solder Terminal		1/4" Q.C. Terminal		Rating
A	B	C	Poles	Catalog Number	Poles	Catalog Number	Poles	Catalog Number	
<b>15 Amp, 4 Pole</b>									
ON	—	OFF	4PST	<b>0140-4020N</b>	4PST	<b>0140-4010N</b>	4PST	<b>0140-4000N</b>	
(ON)	—	OFF	4PST	<b>0140-4021N</b> ①	4PST	<b>0140-4011N</b> †	4PST	<b>0140-4001N</b> ①	15 Amp, 125 Vac
ON	—	(OFF)	4PST	<b>0140-4022N</b> ①	4PST	<b>0140-4012N</b> †	4PST	<b>0140-4002N</b> ①	10 Amp, 250 Vac
ON	—	ON	4PDT	<b>0140-4024N</b>	4PDT	<b>0140-4014N</b>	4PDT	<b>0140-4004N</b>	3/4 HP, 250 Vac
ON	—	(ON)	4PDT	<b>0140-4025N</b>	4PDT	<b>0140-4015N</b>	4PDT	<b>0140-4005N</b>	1,2 or 3 Phase
ON	OFF	ON	4PDT	<b>0140-4023N</b>	4PDT	<b>0140-4013N</b>	4PDT	<b>0140-4003N</b>	15 Amp, 125 Vac
ON	OFF	(ON)	4PDT	<b>0140-4026N</b> ①	4PDT	<b>0140-4016N</b> †	4PDT	<b>0140-4006N</b> ①	10 Amp, 250 Vac
(ON)	OFF	(ON)	4PDT	<b>0140-4027N</b>	4PDT	<b>0140-4017N</b>	4PDT	<b>0140-4007N</b>	3/4 HP, 125-250 Vac
									1,2 or 3 Phase

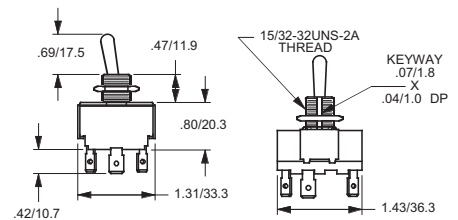
## Dimensions in Inches/Millimeters



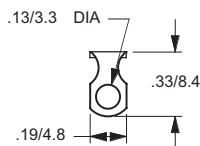
**15 Amp, 2 Pole**



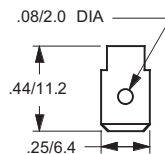
**17 Amp, 3 Pole**



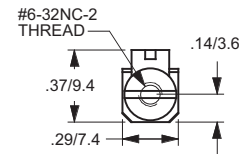
**17 Amp, 4 Pole**



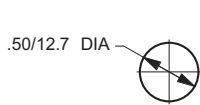
**Solder Lug Terminal**



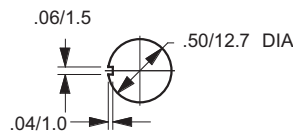
**1/4" Q.C. Terminal**



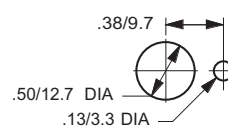
**Screw Terminal**



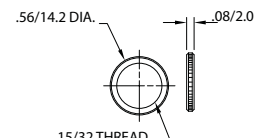
**Mounting Hole**



**Mounting Hole With Keyway**



**Mounting Hole With Locking Ring**



**Knurled Nut**

( ) Momentary. Poles: SP = single pole, DP = double pole, ST = single throw, DT = double throw.  
 ① Not UL or CSA Listed.

**Shaded catalog numbers are normally stocked items. All other items are made to order. Contact your local sales representative for pricing.**