

Calbrite™

STAINLESS STEEL CONDUIT SYSTEMS

Power Generation

Corrosion Resistant

Lowest Cost of Ownership

Ease of Installation

No Special Tools

Broadest Product Offering



2011

www.calbrite.com

THE CALBRITE™ DIFFERENCE

OUR HISTORY

The Calbrite™ heritage dates back to 1917 with the founding of Jackson-Markus Supply by Peter Markus, the grandfather of Dan Markus, president of Calpipe Industries, the parent company of Calbrite. Jackson-Markus Supply manufactured and distributed flow control products, plumbing fittings and construction materials. In the early 1960s, the family expanded into stainless steel and nickel alloy weld fittings, servicing a rapidly-growing market in refining, petrochemical, food processing, breweries, marine and other industries. Recognizing the similarities between the plumbing, PVF and electrical industries, Dan Markus founded Calpipe Industries in 1986 to focus on the electrical industry. Today, Calpipe Industries manufactures and distributes electrical conduit and fittings under the brand names of Calconduit and Calbrite. The company also expanded into security bollards, marketed through Calpipe Security Bollards.

Headquartered in Hammond, IN, Calbrite is the leading name in stainless steel conduit systems for harsh and corrosive environments. We offer the largest stainless steel conduit systems product line in the industry, manufactured to strict guidelines set forth by UL and NEMA, and many of our products are ARRA-compliant.

Calbrite supports our customers through:

- The industry's broadest and deepest product offering. We currently offer more than 2800 SKUs, ensuring you that we can support just about any customer's stainless conduit system need.
- A customer-centric product development process. Simply put, we listen to our customers and quickly deliver solutions designed to meet their needs.
- For example, our new in-use box was developed for a large food-processing manufacturer that had requested a hinged single gang box cover in stainless steel that was both lockable and weatherproof for wash-down environments. We are known for developing products for customers to address their specific needs, and then offering the solution to the industry.
- A national network of independent sales agents across North America. To find the rep nearest you, visit www.calbrite.com/replist.
- Manufacturing and distribution centers in Hammond, IN; Downey, CA and Odessa, FL to service our distributors and their customers throughout the U.S. and Canada.

OUR COMMITMENT

At Calbrite, we are dedicated to providing our customers with quality stainless steel conduit and fittings, delivered on a timely basis, that consistently meet expectations and industry standards.

OUR QUALITY ASSURANCE

Our quality assurance program complies with industry standards established by Underwriters' Laboratories (UL), ANSI, and NEMA.

UL listings: 

- Our approval file number for ferrous electrical conduit is E226472.
- Our approval file number for non-ferrous electrical conduit is E230584 (issue #26KT)

Many of our products are produced to NEMA 4X standards, which ensure protection against corrosion, wind-blown dust and rain, splashing water, hose-directed water and damage from external ice formation in outdoor or indoor environments.



STAINLESS STEEL CLAMPS (Type 316SS)

Split Ring Clamps	
Trade Size	Part Number
1/2"	S60500SP00
3/4"	S60700SP00
1"	S61000SP00
1-1/4"	S61200SP00
1-1/2"	S61500SP00
2"	S62000SP00
2-1/2"	S62500SP00
3"	S63000SP00
4"	S64000SP00



Split Ring Extensions		
Trade Size	Description	Part Number
3/8" x 2"	For Clamps - 1/2" - 2"	S60302SPX0
3/8" x 4"	For Clamps - 1/2" - 2"	S60304SPX0
3/8" x 6"	For Clamps - 1/2" - 2"	S60306SPX0
1/2" x 2"	For Clamps - 2-1/2" - 4"	S60502SPX0
1/2" x 4"	For Clamps - 2-1/2" - 4"	S60504SPX0
1/2" x 6"	For Clamps - 2-1/2" - 4"	S60506SPX0

Split Ring Mounting Plates		
Trade Size	Description	Part Number
3/8"	For Clamps - 1/2" - 2"	S60300SPMP
1/2"	For Clamps - 2-1/2" - 4"	S60500SPMP



Conduit Hangers	
Trade Size	Part Number
1/2"	S60500MH00
3/4"	S60700MH00
1"	S61000MH00
1-1/4"	S61200MH00
1-1/2"	S61500MH00
2"	S62000MH00
2-1/2"	S62500MH00
3"	S63000MH00
4"	S64000MH00

(Also available in SS EMT)



Parallel Clamps	
Trade Size	Part Number
3/4"	S60700PC00
1"	S61000PC00



Strut Clamps	
Trade Size	Part Number
1/2"	S60500SC00
3/4"	S60700SC00
1"	S61000SC00
1-1/4"	S61200SC00
1-1/2"	S61500SC00
2"	S62000SC00
2-1/2"	S62500SC00
3"	S63000SC00
3-1/2"	S63500SC00
4"	S64000SC00

(Also available in SS EMT)

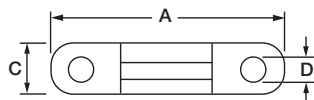


Right Angle Clamps	
Trade Size	Part Number
1/2"	S60500RA00
3/4"	S60700RA00
1"	S61000RA00
1-1/4"	S61200RA00
1-1/2"	S61500RA00
2"	S62000RA00
2-1/2"	S62500RA00
3"	S63000RA00
3-1/2"	S63500RA00
4"	S64000RA00



Right Angle Beam Clamp	
Trade Size	Part Number
1-5/8" x 1-5/8"	S60000RB00

Beam Clamps	
Trade Size	Part Number
1/4" - 20"	S60200BC00
3/8" - 16"	S60300BC00
1/2" - 13"	S60500BC00



STAINLESS STEEL STRAPS (Type 316SS)

2-Hole Straps (Also Available in SS EMT)					
Trade Size	Part Number	A	B	C	Bolt Hole
1/2"	S605002S00	2.427"	0.627"	0.840"	1/4"
3/4"	S607002S00	2.925"	0.748"	1.050"	1/4"
1"	S610002S00	3.370"	0.749"	1.300"	1/4"
1-1/4"	S612002S00	4.440"	0.876"	1.660"	5/16"
1-1/2"	S615002S00	4.440"	1.240"	1.900"	5/16"
2"	S620002S00	5.290"	1.240"	2.370"	5/16"
2-1/2"	S625002S00	6.119"	1.250"	2.874"	1/4"
3"	S630002S00	6.727"	1.250"	3.500"	1/4"
4"	S640002S00	8.947"	1.250"	4.500"	1/4"



1-Hole Straps (Also available in SS EMT)					
Trade Size	Part Number	A	B	C	Bolt Hole
1/2"	S605001S00	0.625"	0.075"	0.840"	1/4"
3/4"	S607001S00	0.750"	0.090"	1.050"	1/4"
1"	S610001S00	0.875"	0.090"	1.300"	1/4"
1-1/4"	S612001S00	0.875"	0.100"	1.660"	1/2"
1-1/2"	S615001S00	1.000"	0.125"	1.900"	1/2"
2"	S620001S00	1.125"	0.125"	2.370"	9/16"
2-1/2"	S625001S00	1.250"	0.150"	2.874"	9/16"
3"	S630001S00	1.250"	0.150"	3.500"	9/16"
4"	S640001S00	1.250"	0.180"	4.500"	9/16"

